

**TURNKEY SOLUTION
PROVIDER**



EL DIDI GROUP



soilmecc
Drilling and Foundation Equipment

**A SATISFIED
CUSTOMER
IS OUR REWARD**



EL DIDI GROUP



soilmeco
Drilling and Foundation Equipment



SOILMEC	11 - 17
EGYMEC	18 - 19
SAICI	22 - 23
BETEK	24 - 25
JEANLUTZ	26 - 27
UNIVERSAL AUGERS	28 - 29
JUNTAN	30 - 31
MECBO	32 - 33
MANTOVANIBENNE	36 - 37
EPE	36 - 37
FUWA	38 - 39
BARIN	40 - 41
ZOOMLION	42 - 43
CMC AERIAL	44 - 45
PLATFORMS TECI	46 - 47
TREFOLO ROSSO	48 - 49
REDAELLI	50 - 51
LINK-BELT CRANES	52 - 53
LONKING FH	54 - 55
FARESIN FARESIN	56 - 57
TOYO	58 - 59
GRINDEX	60 - 61
POWERLINK	62 - 63
PERIN ELDIDI TOWER	64 - 65
LIGHT DRILLMEC	66 - 67
ITALDRAGHE	68 - 69
NFLG	70 - 71
	72 - 73



Company Overview

ElDidi Holding Group Ltd.. (ElDidi Group), a BVI Company with Registration No 1768293, was established to cater to the construction needs of our Clientele thru its extensive network in the Middle East, part of Africa and Canada.

ElDidi Group the resources, experience and the capability to undertake and execute any project in response to the client's requirements for foundation, drilling rigs and water & oil well. It is highly competitive and widely experienced in the construction industry up to date. It can also supply technical support to customers as well as sales and after sales service for all the relevant products.

ElDidi Group service staff, Engineers and Technicians are well trained and experienced troubleshooting any obstacle on the site. Service staff can provide a detailed job description and technical estimation to any operation required. Regional hubs ensure that we have the right equipment and manpower to reach all customers' location quickly and efficiently.

ElDidi Group will continue to do the best to provide good / reliable products and professional After sales services to all our customers in the U.A.E., Egypt, Saudi Arabia and the GCC to enhance Client satisfaction.

ElDidi Group can fit all your needs to assist your Engineers and Technicians through our professional

Service Staff that offers the flexibility to provide the combination of services providing equipment and tooling recommendations, maintenance procedure to keep your projects running smoothly on time.

From our facilities in Jebel Ali Freezone, Dubai-UAE; Fujairah Freezone, Fujairah-UAE; Jeddah-Riyadh-Dammam Giza-Makkah, Saudi Arabia and Attaka Freezone, Suez-Egypt We provide high quality after sales service and maintenance to all kind of machines under the scope of supply of the Group having stock of some machines for quick delivery and fast moving spare parts availability.

Our new member to the Group, Egymec Petroleum Services FZCO, a part of our Group and one of the biggest manufacturer of foundation drilling tools and accessories in the Middle East and Africa, has achieved the following.

TUV Rheinland Certification for Management System Standards:

ISO 9001:2008 Certificate Reg. No. 01 100 124265
Quality Management System

ISO 14001:2004 Certificate Reg. No. 01 104 087582 Environmental Management System BS
OHSAS 18001:2007 Certificate Reg. No. 01 113 060717 Occupational Health & Safety (OH&S) Management System.



Mission Vision & Values

Mission

To pioneer in providing effective solutions and aftersales services in the loading foundation and construction machinery sectors.

Vision & Values

Through supplying high quality equipment, partnering with world leader companies and expanding worldwide, we ensure our clients' satisfaction.



Eng. A.F. El-Didi
Chairman of the Board

Service & Spare Parts

Side by side with the customer.

Over the course of their 26 years of operating experience Soilmec has created a recognizable brand that customers can rely on, knowing that they can count on a safe, dependable product that has been thoroughly tested on-site. What's more, customers benefit from a full assistance service, from first contact to technology sharing, from purchasing the equipment to on-site operating, from product personalization to staff training packages.

Our after-sales service is unrevealed, with customer services available 24/7, spare parts delivered in record time, problems solved in any situation, even in the most complicated circumstances. Because a satisfied customer is our greatest reward.

Speed is crucial in the strategic area of technical assistance and spare parts. Just like being able to understand customers problems and provide precise and relevant answers. Soilmec group staff members operating in this critical area are all specially trained for this "firing line".





SR SERIES

LDP - Large Diameter Piles

	Model	Max Pile Diameter	Max Depth	Max Torque	Diesel engine T3/T4	Operating weight
Evolution	SR-30	1500 mm	49 m	130 KNm	164/168 KW	34 t
	SR-40	1500 mm	61 m	161 KNm	180/NA KW	47 t
	SR-60	2000 mm	77 m	212 KNm	261/NA KW	60 t
	SR-65	3000 mm	77.9 m	258.5 KNm	283/283 KW	65 t
	SR-80	2500 mm	77 m	271 KNm	328/NA KW	80 t
Advanced	SR-45	3000 mm	65 m	185 KNm	201/201 KW	37/38 t
	SR-75	2500 mm	76 m	290 KNm	328/328 KW	70 t
High-Tech	SR-95	3000 mm	106.5 m	351 KNm	403/403 KW	90 t
	SR-115	2500 (3500) mm	107 m	435 KNm	470/470 KW	118 t
	SR-125	3500 mm	121 m	435 KNm	470/470 KW	128 t
	SR-135	4000 mm	119 m	435 KNm	470/470 KW	131 t
	SR-145	3500 mm	121 m	435 KNm	470/470 KW	145 t



CFA - Continuous flight auger

	Model	Max Pile Diameter	Max Pile Depth	Max Torque	Diesel Engine T3/T4	Extraction force	Operating weight
Evolution	SR-30	900 mm	23 m	130 KNm	164/168 KW	380 KN	35/37.2 t
	SR-40	1000 mm	20 m	161 KNm	180/NA KW	520 KN	48.6 t
	SR-60	1000 mm	22 m	212 KNm	261/NA KW	560 KN	62.7 t
	SR-65	1200 mm	25.9 m	258.5 KNm	283/283 KW	620 KN	61 t
	SR-80	1200 mm	24 m	271 KNm	328/NA KW	800 KN	80 t
Advanced	SR-45	1000 mm	24 m	185 KNm	201/201 KW	480KN	40.5/42 t
	SR-75	1200 mm	27 m	290 KNm	328/328 KW	984 KN	71 t
High-Tech	SR-95	1200 mm	32 m	351 KNm	403/403 KW	1110 KN	94 t
	SR-115	1200 mm	34.5 m	435 KNm	470/470 KW	1293 KN	118 t
	SR-125	1200 mm	36 m	435 KNm	470/470 KW	1296 KN	130 t
	SR-135	1200 mm	38.5 m	435 KNm	470/470 KW	-	131 t
	SR-145	1200 mm	36 m	435 KNm	470/470 KW	1362 KN	145 t



CAP/CSP - Cased augered/secant piles

	Model	Max diameter	Max pile depth	Max cased depth	2nd rotary torque
Advanced	SR-75		24.5 m	18.4 m	268 KNm
	SR-95		27.3 m	20.8 m	335 KNm
	SR-115		28.5 m	22.5 m	-
High-Tech	SR-125		29.3 m	22.8 m	508 KNm
	SR-135		28.6 m	23 m	-
	SR-145		29.3 m	22.8 m	508 KNm



DP - Displacement piles

	Model	Max Pile Diameter	Max TCT Diameter	Max Pile Depth	Max pile depth with lattice mast extension
Advanced	SR-45	350 mm	400 mm	20 m	23 m
	SR-75	600 mm	800 mm	22.7 m	30.7 m
	SR-95	600 mm	800 mm	25.5 m	33 m
High-Tech	SR-115	800 mm	1000 mm	25.5 m	34 m
	SR-125	800 mm	1000 mm	28.5 m	36 m
	SR-135	800 mm	1000 mm	31.5 m	39 m
	SR-145	800 mm	1000 mm	31.5 m	39 m



TJ - Turbojet

	Model	Max Treatment Diameter	Max pile depth with 8.5 m string extension	Mast lattice boom extension length	Max depth c/w lattice boom mast extension
Advanced	SR-45	1000 mm	20 m	10 m	23 m
	SR-75	1500 mm	22.7 m	16 m	30.7 m
High-Tech	SR-95	1500 mm	25.5 m	15.8 m	33 m
	SR-115	1500 (2000) mm	24 m	-	34 m
	SR-125	1500 (2500) mm	28.5 m	15.8 m	36 m
	SR-135	1500 (2000) mm	39 m	-	39 m
	SR-145	1500 (2500) mm	31.5 m	15.8 m	39 m



BFS-Bottom feed system

MODEL	Deep vibrator max penetration	Eccentric moment	Max rotation spee and frequency
SR-50 BFS	12 m	1.8 kgm	300 rpm-50 hz



STM-SF SERIES

STM Series - Truck mounted

Model	Max Diameter	Max Pile Depth	Max Torque
STM-20	1100/1800 mm	30 m	85 KNm
STM-30	1500/2200 mm	54.5 m	130 KNm



SF Series - CFA dedicated rigs

Model	Max diameter	Max pile depth	Max torque	Rated engine power	Extraction force	Opening Weight
SF-50	900 mm	25 m	100 KNm	164 KW	510 KN	35 t
SF-65	1000 mm	30 m	165 KNm	205 KW	572 KN	51.5 t



LHR Series - Low head boom

	Model	Max Diameter	Max Depth	Modular mast height range	Operating weight
Evolution	SR-30	3000 mm	18 m	7.5/8.8 m	33.2 t
Advanced	SR-45	3000 mm	19.4 m	8.5/9.8 m	37.8 t
	SR-75	2500 mm	60 m	5.9/8.9 m	77.2/66.8 t



SC - SA/RT3 Series

SC Series - Hydraulic crawler Cranes

Model	Max Load Capacity	Max Swing Speed	Rated Engine Power	Operating weight
SC-50 HD	50 t @ 3.5 m	3 rpm	201 KW	49 t
SC-70 HD	70 t @ 3.5 m	4.5 rpm	403 KW	73 t
SC-80	72.6 t @ 3.5 m	3 rpm	205 KW	74 t
SC-90 HD	90 t @ 3.6 m	3 rpm	470 KW	93 t
SC-120 HD	120 t @ 3.7 m	3 rpm	522 KW	117.4 t



SA & RT3 Series

Model	Max Diameter	Max Depth	Max Torque	Min Crane Capacity
RT3-ST	3000 mm	80 m	210 KNm	40 t
SA-40	4000 mm	94 m	413 KNm	90 t



Grab and hydromill Series

BH, GH series

Model	Max Depth	Excavation dimension	Weight
HYDRAULIC GRABS			
BH-8	75 m	350/800x2000/3200	8 t
BH-12	75 m	500/1200x2000/3500	12 t
GH-12	75 m	500/1200x2500/4200	12.5 t
GH-15	75 m	600/1500x2800/4200	15.2 t
HYDRAULIC GRABS			
GC-11	depending on the crane	600/1200x2500/3000	16 t
GC-16	depending on the crane	800/1200x2800/3500	11.3 t



Milling Units

Model	Panel Thickness	Panel Width	Body Length	Weight
SH-30	700/1200 mm	2600/3000 mm	10.5 m	30 t
SH-40	800/1800 mm	2800/3200 mm	13 m	40 t
SH-50	1000/2000 mm	2800/3200 mm	14.7 m	50 t

Tiger and Cougar Series

	Model	Hydromill module	Max cutting depth	Engine Power	Machine Class
Cougar	SC-100	SH-30	52 m	563 KW	100 t
	SC-120	SH-30 / SH-40	57/63 m	653 KW	135 t
Tiger	SC-135 HD	SH-30 / SH-40 / SH-50	100/120(150) m	653 KW	135 t
	SC-200 C/W P450/P700	SH-30 / SH-40 / SH-50	250 m	450 KW	200 t



SM-SMG-SMGT - ST Series

SM Series - Microdrilling

Model	Rated Engine Power	Max Troque	Max Hoist	Weight	Single Passage
SM-4	115 KW	1300 daNm	70 KN	5.8 t	-
SM-5	75 KW	970 daNm	40 KN	5.6 t	7 m
SM-6	100 KW	3400 daNm	52 KN	7 t	8 m
SM-9	105 KW	1000 daNm	60 KN	9.3/9.5 t	12 m
SM-10	116 KW	1300 daNm	70 KN	10.5/12.5 t	12 m
SM-12	119 KW	4000 daNm	140 KN	15 t	-
SM-14	119 KW	1210 daNm	89 KN	14 t	18 m
SM-17	160 KW	3700 daNm	100 KN	17/19 t	-
SM-18	176 KW	3700 daNm	113 KN	19 t	20.4 m
SM-22	194 KW	4500 daNm	140 KN	22 t	21/24 m
SM-28	194 KW	3300 daNm	170 KN	33/38.8 t	34 m



SM-G Series - Soil Investigation

Model	Rated Engine Power	Max Troque	Max Drilling Speed	Max Hoist	Weight
SH-30	85 KW	900 daNm	838 rpm	100 KN	8.9 t
SH-40	176 KW	1000 daNm	1000 rpm	195 KN	16.7 t

SM-GT Series - Geothermal Power

Model	Rated Engine Power	Max Troque	Max Hoist	Weight
SM-10G	119 KW	870/2370 daNm	120 KN	13 t
SM-16G	176 KW	1100/3200 daNm	200 KN	15/17 t

ST- Series - Tunnel Consolidation

Model	Rated Engine Power	Working Radius at 0°	H Max from Ground	Max Hoist	Weight
ST-20	1230 + (90) KW	1700/4696 mm	6196 mm	67 KN	21 t
ST-60	135 + (116) KW	3700/6500 mm	10700 mm	70 KN	
ST-120	164 + (2x90) KW	3600/6600 mm	10100 mm	84 KN	119 t



Drilling accessories

SMT-500-MUD Treatment Unit

Nominal slow rate (on water)	500 m^3/h
Max frrd density	1.25 t/m^3
Approx.soild separation	200 t/h
Power supply	400 v@50 hz
Installed power	207.6 Kw

SDM-35-Detritus Man

Storage capacity	35 mc
Discharge flow rate	240 mc/h
Screw Conveyeer speed	17.9 rpm

SMD-90 Mud Decanted Centrifuge

Structure	Containerized or retractable skid
Bowl inside diameter/length	590/2200 mm
Installed power range	120-245 kw

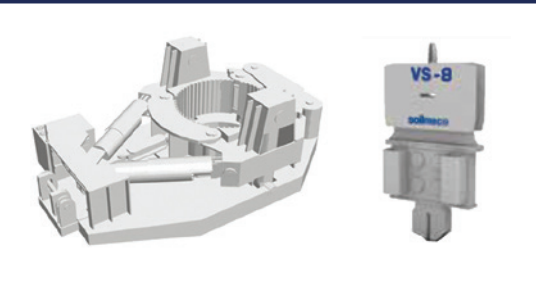


Casing Oscillators

MODEL	Diameter	Max Extraction force	Max closing force	Max torque
VRM 100 KL	1000 M	770 KN	500 KN	630 KNM
VRM 130 KL	1300 M	1790 KN	1560 KN	1700 KNM
VRM 150 KL	1500 M	1790 KN	1580 KN	1950 KNM
VRM 200 KL	2000 M	1790 KN	1560 KN	1950 KNM
VRM 2000	2000 M	265 KN	190 KN	2430 KNM
VRM 2500	2500 M	515 KN	271 KN	3180 KNM
VRM 3000	3000 M	725 KN	478 KN	7070 KNM

Extractors

MODEL	
ETB-20	for pipes and sheet piles
ETB-8	for sheet piles



MUD Line

Concrete Pumps

MODEL	Volumetric	Max engine	Gate pressure	Weight
SKP-65	65 m ³ /h	90 KW	50 bar	7 t
SKP-80	80 m ³ /h	112 KW	50 bar	7.5 t
SKP-90	90 m ³ /h	112 KW	50 bar	7.8 t
SKP-110	110 m ³ /h	134 KW	50 bar	8 t
SKP-120	120 m ³ /h	134 KW	50 bar	9 t



Mixers

MODEL	Tank capacity	Output per hour	Mixing time	Max delivery
BE 10 ET	1000 l	10000+12000 l	5/6 MIN	1960 l/MIN
BE 10 DS	1000 l	10000+12000 l	5/6 MIN	2240 l/MIN

MODEL	Type	Version	Volume	Mixing capacity
SBT-30	Skid or c/w silos	automatic	1250 dm ³	30 m ³ /h
SBT-30.34	Integrated silos 34m storage	automatic	1250 dm ³	30 m ³ /h

Self Priming Pumps

BETA SERIES	Max delivery	Max head	Motor rated power	Soild passage
60 ET	700 l/MIN	12 M	2.2 KW	31 MM
60 DS	600 l/MIN	16 M	3.7 KW	31 MM
80/2 ET	1320 l/MIN	20 M	4 KW	38 MM
80/2 DS	1400 l/MIN	22 M	6.6 KW	38 MM
100 DS	2500 l/MIN	19 M	10.3 KW	44 MM

DELTA SERIES	Max delivery	Max head	Motor rated power	Soild passage
80/2 ET	950 l/MIN	12 M	7.5 KW	30 MM
80/2 DS	1660 l/MIN	16 M	9.5 KW	30 MM
120/2 ET	2000 l/MIN	14 M	11 KW	40 MM
120/2 DS	2200 l/MIN	22 M	15.3 KW	30 MM
120/S ET	3200 l/MIN	23 M	11 KW	28 MM
120/S DS4000 l/MIN		35 M	15 KW	28 MM
150/2 DS	3650 l/MIN	13 M	15 KW	38 MM
150/S	5000 l/MIN	21 M	22 KW	38 MM
150/S DS4925 l/MIN		22 M	15 KW	45 MM
150/ 2 DS5000 l/MIN		32 M	30.5 KW	38 MM

GRINTA SERIES	Max delivery	Max head	Motor rated power	Soild passage
200 ET	8500 l/MIN	18 M	22 KW	60 MM
200 DS 9700 l/MIN		30 M	47 KW	60 MM
250 ET	13600 l/MIN	48 M	90 KW	-
250 DS	13600 l/MIN 48 M		100 KW	-



Grout Line

Agitators

Model	Max capacity	Electric motor power	Motor speed	Max speed	Dry weight
SGA-5	500l	2.2 KW	1450 RPM	31 RPM	
A 80 E	800l	1.5 KW	1450 RPM	22 RPM	
SGA-10	1000l	2.2 KW	1450 RPM	31 RPM	330/400 KG
A 170 E	1700 l	2.2 KW	1450 RPM	31 RPM	780 KG
A 200 E	2000l	2.2 KW	1450 RPM	22 RPM	780 KG
A 350 E	03.5 0l	4 KW	1450 RPM	31 RPM	1120 KG
SGA-45	4500l	5.5 KW	1450 RPM	15 RPM	1800 KG
SGA-100	10000l	535 KW	1450 RPM	15 RPM	3600 KG

Injectors

Model	Electric motor power	Motor speed	Max delivery	Head	Dry weight
SGP-3.12	5.5 KW	1450 RPM	650 l/MIN	12 mpa	320 kg
GP 30	4 KW	1450 RPM	40 l/MIN	9 mpa	370 kg
GP 80	5.5 KW	1450 RPM	82 l/MIN	9 mpa	510 kg
SGP-8.8	7.5 KW	1450 RPM	78 l/MIN	7.8 mpa	400 kg
SGP-10.10	18 KW	1450 RPM	105 l/MIN	10 mpa	670 kg
GP 140	7.5 KW	1450 RPM	140 l/MIN	9 mpa	513 kg
SGP-20.5	22 KW	1450 RPM	205 l/MIN	-	1100 kg
SGP-36.3	22 KW	1450 RPM	360 l/MIN	-	1210 kg
SGP-14.15	45 KW	1450 RPM	140 l/MIN	-	1250 kg

TurboMixing

Model	Max Volume batch	Electric motor power	Max delivery	Head	Dry weight
SGT-6	265 l	5.5 KW	650 l/MIN	20 M	300 KG
SGT-7	390 l	5.5 KW	650 l/MIN	20 M	345 KG
MT- 31 E	310 l	7.5 KW	750 l/MIN	16 M	395 KG
SGT-12 PLUS	265 l	5.5 KW	650 l/MIN	20 M	800 KG
SGT-13 PLUS	390 l	5.5 KW	650 l/MIN	20 M	845 KG
MT-58 E	600 l	9.2 KW	840 l/MIN	18 M	500 KG
MT-130 E	1300 l	11 KW	1400 l/MIN	20 M	740 KG
MT-200 E	2000 l	15 KW	2720 l/MIN	17 M	800 KG
SGT-45	2000 l	26.5 KW	3000 l/MIN	20 M	800 KG

Grout Plant

Model	Output Per hour	Agitators	TurboMixing	Grout pump	Dry weight
GI ET 2	2000 l	A 40	MT 20	GP 30	1200 kg
GI ET 4	4000 l	A 80	MT 31	GP 80	1480 kg
GI ET 4 K	4000 l	A 45	MT 32	GP 80	1400 kg
GI ET 8	8000 l	A 805	MT 58	GP 140	1880 kg





Giving the edge to the master of Piling

Egymec Foundation Drilling Tools

EGYMEC production plant around 10,000 sq. mtr are located in attaka free zone. based in Egypt since 2010.

EGYMEC have manufactured drilling tools and accessories, accumulating as a result through knowledge for best solution to be made available to the important contractors and companies involved in building and foundation work.

Our ability to combine experience and quality research with a deep understanding of our client's global needs without forgetting to be competitive was decisive for our success. Thanks for our highly skilled and motivated staff.





SAICI BENTONITE

Model	Output m³/h	Cut Point d ₅₀ µm	Installed Power Kw	Tank Capacity m³	Screen (m²)		Hydro-cyclone	Weight Kg
					Main	Secondary		
SINGLE PASSAGE-SD SERIES								
SD 1000 HP	70	45	15	1.2	1	0.8	1X280	1800
SD 1500 HP	90	45	18	1.2	1	0.8	1X280	1850
SD 2000 HP	140	45	24	1.5	1.2	1	1X420	2200
SD 2500 HP	180	45	26	1.5	1.2	1	1X420	2100
SD 4000 HP	350/40	45	45	2.5	1.8	1.5	2X420	4500
SD 5000 HP	450/500	45	65	5	3.5	3	2X550	7500
DOUBLE PASSAGE-SD/HPD SERIES								
SD 2500 HPD	150/200	30	22+22	3	1.5	1.2	1x420 + 4x125	4200
SD 4000 HPD	250/30	30	45+45	4	4.5	4.8	2x420 + 8x125	6600
SD 5000 HPD	350/400	30	55+55	6	6	6	2x550 + 12x125	8500

SAICI BENTONITE DESILTERS - SDS

Model	Output m³/h	Cut Point d ₅₀ µm	Installed Power Kw	Tank Capacity m³	Screen (m²)		Hydro-cyclone	Weight Kg
					Main	Secondary		
SD 1000 HPS	60	30	15	1.2	1.2	1	3x150	2000
SD 2000 HPS	120	30	25	1.8	1.5	1.2	4x150	2400
SD 3000 HPS	180	30	37	2.5	1.6	1.4	6x150	3000
SD 4000 HPS	250	30	45	3	1.8	1.6	8x150	3500

Products

Desanders and Desilters for Bentonite.
Turbo - mixers and Mixture Plants for Bentonite.
Air Lifting machine for Bentonite

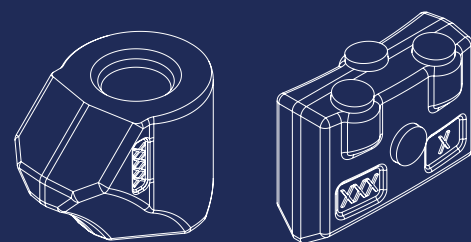
SAICI Bentonite Turbo Mixer - Manual / Automatic

Model	Capacity m³/h	Installed Power (Kw)		Tank Capacity (m³)	Weight Kg
		Electric Motor	Diesel Motor		
STM 500	150	7.5	10	0.6	650
STM 1000	200	11	15	1.2	850
STM 1500	200	11	15	1.8	950
STM 1800	200	11	15	2	1050





BETEK
Progress!



BETEK is one of the most important manufacturers of wear parts made from tungsten carbide. We also develop carbide solutions especially for protection against wear.

Our production programmed offers tool systems for over 10 fields of application. Drilling, milling chopping, compacting - no other material stands up to strains like these as well as tungsten carbide from BETEK. Above average resistance to wear and tear is the product of extreme hardness, the right degree of durability and above all first class quality. That's why we use only the purest raw materials and none that have been recycled!

The tungsten carbide's composition is matched to the job at hand. The entire production process - from mixing and pressing all the way to sintering - is subjected to the strictest of quality controls, with regular tests in the Simon Group's central laboratory.

Whenever men on the construction site have tungsten carbide from Betek in their hands, they can therefore be sure: Nothing works harder!

Our Production

Foundation drilling
Diaphragm wall cutter
Recycling industry
Mining & Tunneling industries
Trenching
Tungsten carbide
Hydraulic milling cutter
Road milling
Surface mining
Stabilizers
Horizontal Directional Drilling

Electronically

When the tungsten carbide powder is pressed in moulds - into so-called pressed parts - it is compressed to approximately 50% of its final density.

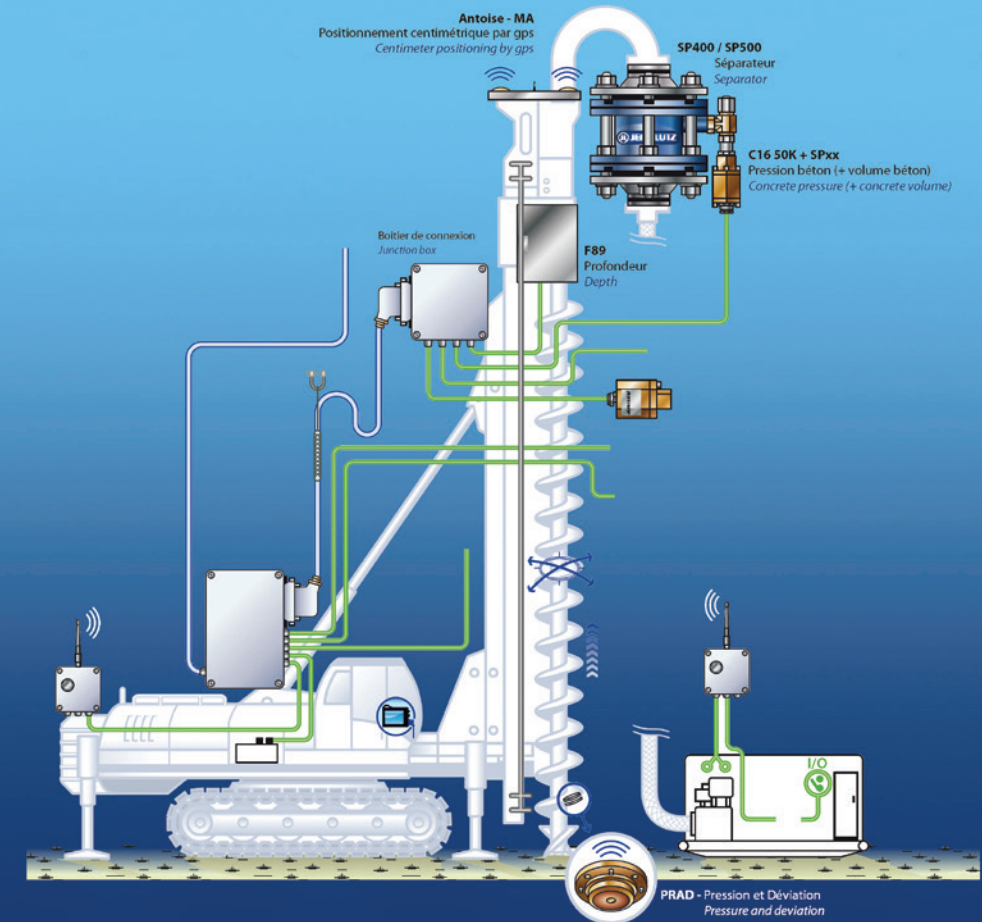
The Right

Raw materials are mixed according to the desired tungsten carbide quality and wet milled. Tungsten carbide powder with a pouring capability is produced in the hot gaseous flow of the spray tower.

Sintering at 1450° C

The tungsten carbide, along with its excellent properties, is produced through sintering in vacuum furnaces and sinter-hip installations. Precise process management which, in addition to specialist knowledge, also demands a great deal of experience, forms a decisive factor in the quality of the tungsten carbide produced.





The Jean Lutz Company specialises in the design, manufacture and use of measuring and control instruments used in connection with the construction of foundations for major structures such as dams, metros, tunnels, motorways, bridges, large buildings etc.

Our clients specialize in ground technologies and below ground constructions: major specialist foundation contractors, inspection entities, design offices, geotechnicians, research bodies, government entities. We can be found in geotechnics, in geological exploration using drilling parameters, the identification of voids and cavities, the control and analysis of treatment fluid injection into the ground, sealing and consolidation injection, continuous flight auger piling, ballasted columns, tie-beams, checking the verticality of columns and walls etc



Working Process

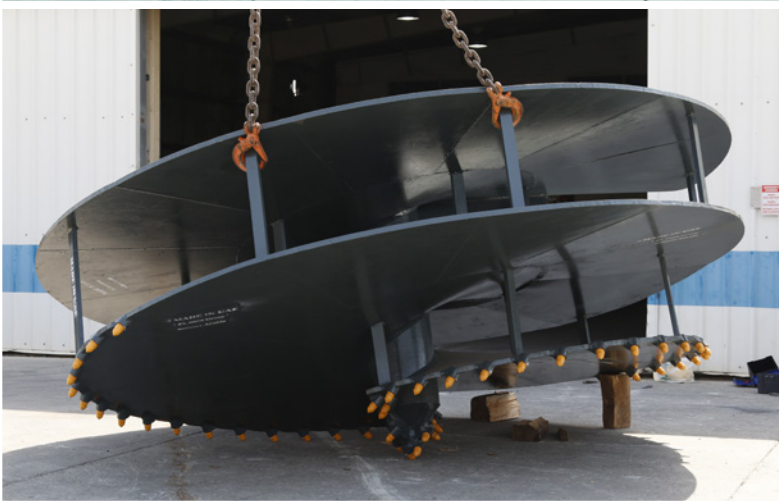
The CFA boring technique has undergone major development over recent years and is now widely used for constructing the foundations of buildings.

The principle consists in screwing a hollow shaft auger into the ground to a depth at least equal to the length of the pile to be used; the auger is then extracted from the ground without being unscrewed while, at the same time, concrete is injected through the auger's hollow shaft. Spectacular improvements made to boring equipment have allowed piles measuring 500 to 1000 mm in diameter to be installed at depths of up to 35 m.

TECHNICAL SPECIFICATIONS

Power supply	12-36 V AC/DC
Temperature	- 20° / 60° C
Weight	6 kg
Working current	2.3 A
Standby current	29 mA
Waterproof	IP67
Sensors compatibility	4-20 mA, impulsions NPN/PNP, CANopen / 4-20 mA, NPN/PNP pulses, CANopen
GPRS	Quadribande / Quadband
GPS accuracy (internal)	30 m
Color touch screen	10.4"
Data transfer	USB - BLUETOOTH - GPRS
Software	Microsoft Windows XP, Windows Vista , Windows 7





Universal Augers Ltd. was established in 1990. In 2004 Universal Augers Ltd. was awarded ISO 2001 accreditation.

Universal Augers Ltd. are manufacturers, stockiest and suppliers of wear parts for the forestry, quarrying, green waste and recycling industries. We supply parts for the major brands of machinery and our specialist sales engineers can advise on the products best suited to your application. Other specialist parts include the manufacturer and supply of tungsten carbide cutters for stump grinders.

Through our network of quality supplier partners and sub-contractors, Universal Augers can provide cast steel and forged items with and without tungsten carbide to OEM manufacturers. Part are quality checked throughout the manufacturing process and again by our own quality control team before dispatch. Agricultural spares and agricultural tools make up a high proportion of this service.

Foundation Drilling Tools
CFA Augers, Couplings & Auger Bungs
Solid Stem, Horizontal, Exploration and Post Hole Augers
Teeth, Adaptors & Pilot Bits
Specialist Drill Tools & Polymer Drill Mud
Refurbishment & Replacement Flights



Foundation Drilling Teeth

Holder					
Series	WT KG	Dimensions			A°
		A	B	C	
833-18	1.7	19	26	97	30°
855-25	3.4	28	46	132	30

Teeth					
Series	WT KG	Dimensions		Locking System	
		A	B	PIN	LOCK
18TL	1	118	56	18-20 MPN	18-20 MLK
25T	2.3	168	64	25-30 PN	25-30 LK

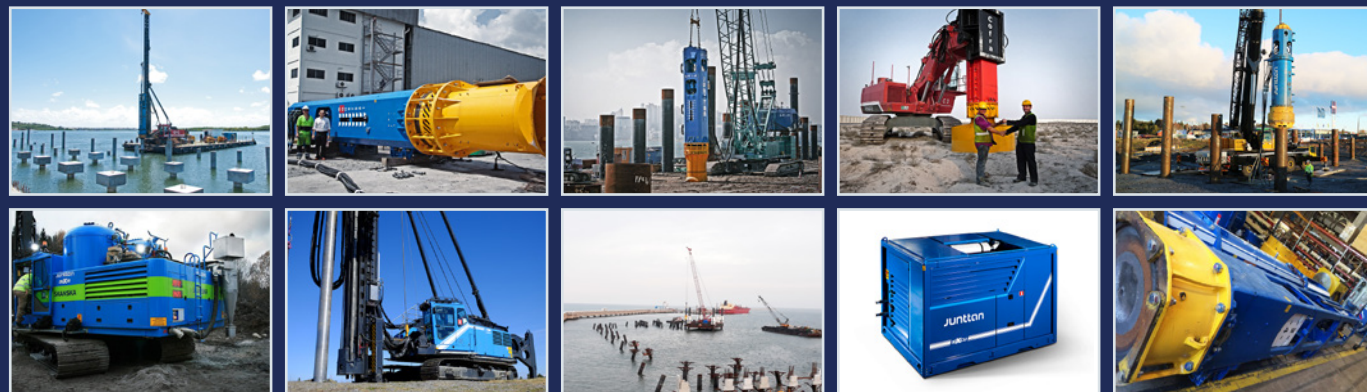
Steel Pin		Rubber Lock	Holder
T-18MPN		18MLK	18
25-30PN		25-30LK	25/30



Junttan
respecting ground

Junttan Oy has 40 years of experience in developing and manufacturing the industry's leading piling equipment. The roots of Junttan reach back to the 1960s to a Finnish foundation company called Savon Varvi. Junttan Oy designs and manufactures hydraulic piling equipment. The Junttan product range is comprised of the world's leading pile driving rigs, multipurpose piling and drilling rigs, deep stabilisation rigs, as well as hydraulic impact hammers, rotary heads, and power packs.

Combining state-of-the-art piling equipment with uncontested customer service and sheer determination to go great lengths to help customers succeed, Junttan can improve also your operational efficiency.



Pile driving rigs
Hydraulic impact hammers
Power packs
Multipurpose piling rigs
Deep stabilization rigs
Rotary heads
Leader packages
Used and rental equipment





mECBO s.r.l.

Pompe per Calcestruzzo Carellate, serie PULSAR
Trailer Mounted Concrete Pumps, serie PULSAR
Pompes a Beton Sur Remorque, serie PULSAR

- La ULTRAVENTENNALE esperienza della nostra società nel pompaggio del calcestruzzo in importanti cantieri a tutte le condizioni, consente di proporre la nostra serie di macchine per tutte le esigenze con le più affidabili prestazioni!!
- The 20 years old experience of our company for the concrete pumping in big jobsites of all sizes, allows to us, to offer our equipments range for all requirements by the reliable performances.
- Depuis 20 ans, l'expérience de notre société, dans le pompage du béton sur des chantiers de toutes importances, nous permet d'offrir des matériels d'une très grande fiabilité, avec des performances remarquables.

CAR - P.7	120 - 150
CAR - P.6	90 - 110
CAR - P.6	50 VS
CAR - P.4	25 - 30
CAR - P.4	30 SB
CAR - P.4	65 AP
CAR - P.2	100 BAR

Technical Performances

	Type/Cod.	P4.25	P4.40	P4.40	P6.80	P6.90	P6.110	P7.120	P7.150	P.2.100	P.4.30.SB	P6.50VS
Max. Volumetric output	Mc /H	25	40	40	80	90	110	120	145	10	30	50
Max. Outlet pressure	BAR	50	50/70	50/70	60/90	60/90	60/90	50/80	50/80	100	50	100
Hooper Capacity	Lt.	350	350	350	450	450	480	480	480	250	300	450
Unloading Height	mm.	1200	1200	1200	1400	1400	1400	1500	1500	800	1200	1400
Pumping Cylinders diameter	mm.	150	180	180	200	200	200	230	230	100	150	180
Pumping Cylinders stroke	mm.	1000	1000	1000	1600	1800	2000	2000	2000	800	1000	1400
Cycles/mm.	N./m'	26	26	26	26	26	29	24	29	26	30	34
Outlet Diameter	mm.	125	125	125	150	150	150	150	150	20	38	110
Hydraulic Ratio	1:-	2/2,5	3/2,5	3/2,5	3,52/2,48	3,52/2,48	3,52/2,48	5,70/3,4	5,70/3,4	1 44	3,0	2 80,
Mounted Power	KW	38	45	45	110	110	132	132	150	20	38	110
Oil Tank Capacity	Lt.	250	350	350	400	400	450	450	450	100	250	400
Air Compressor	Lt./BAR	105/10	105/10	105/10	105/10	105/10	105/10	105/10	105/10	105/10	105/10	105/10
Water Pump	Lt./BAR	35/16	35/16	35/16	35/16	35/16	35/16	35/16	35/16	35/16	35/16	35/16
Dimensions Length	mm.	4800	5000	5000	6000	6000	6500	6500	6500	3200	3800	5100
Dimensions Height	mm.	1700	1700	1700	2100	2100	2300	2300	2300	1500	1700	1900
Dimensions Width	mm.	1600	1600	1600	1900	1900	2000	2000	2000	1080	1500	1800
Approx. Weight	Kg.	3200	3500	3500	5000	5000	6000	7500	7600	1150	2300	4200





Pile Breaker PB

For construction needs, the consolidation piling protrude out from the ground by one or two meters, therefore they must be removed in order for building work to begin. Mantovanibenne Pile Breakers solves this problem by crushing the foundation piles quickly and accurately leaving the rebar and the structural integrity of the pile itself intact.

Silent attachment

By using the Pile Breaker the restrictive environmental regulations are respected especially with regards to the noise on construction sites.

Tip kit

Each module is supplied with a kit complete with three cylinder tips.

Lifting kit

The Pile Breaker is supplied with a lifting kit to be connected to the excavator.

Pipe protection

The special shape of the Pile Breaker is also designed to ensure the protection of the hydraulic system in every working condition.

Modularity

The attachment has been designed using a Modular System concept (linked modules) which allows the demolition of both round and square piles. By varying the number and the type of module it is possible to obtain an attachment which is suitable for any specific working operation with maximum flexibility.

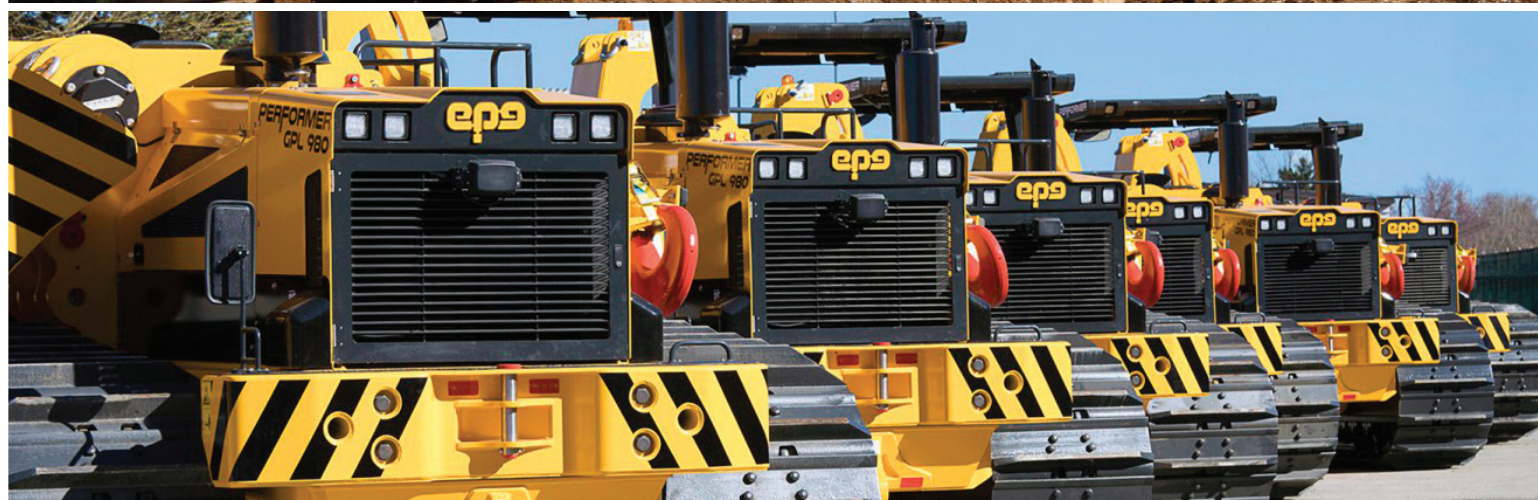
Technical Specifications

ROUND PILES												SQUARED PILES			
MODEL	LIGHT SERIES					HEAVY SERIES									
Excavator Weight	t	10-15	10-15	15-20	15-20	20-25	20-25	25-30	25-30	30-35	30-35	10-15	10-15	10-15	15-20
Pile Diameter	mm	350-450	500-600	650-750	800-900	750-900	900-1050	1100-1250	1250-1400	1450-1600	1650-1800	-	-	-	-
Pile Side	mm	-	-	-	-	-	-	-	-	-	-	200-300	350-500	500-650	650-800
Nr. of Elements		6	7	8	9	8	9	10	11	12	13	4+4	4+4	4+4	4+4
Tool Weight	kg	1000	1160	1330	1490	2000	2250	2500	3100	3380	3665	700	800	1000	1100
Hydraulic working pressure	bar	320-350	320-350	320-350	320-350	320-350	320-350	320-350	320-350	320-350	320-350	320-350	320-350	320-350	320-350
Oil flow	l/min	150	175	200	225	200	225	250	275	300	325	100	100	200	200
Width max. H	mm	1700	1900	2050	2200	2185	2375	2560	2750	3230	3420	1650	1775	1950	2100



SQUARED PILES Pile Breaker





EURO PIPELINE EQUIPMENT PIPELINE SOLUTIONS. ALL OVER THE WORLD.

Euro Pipeline Equipment design, manufacture and export a full range of pipeline equipment well known in the most important onshore pipeline projects around the world. Euro Pipeline Equipment is your partner in each phase of site construction.

The production is fully inside the company and we promote the sale and the rental of the machineries and pipeline equipments.

The Company is positioned as a supplier and also partner of the most important onshore pipeline contractors in the EMEA region: this allow Euro Pipeline Equipment to have fresh feedback from site in order to always improve the quality of its products.

Our experience and the reliability gained throughout years of activity allow us to guarantee customized machines according to client's needs, characterized by high performance, simplicity of use, reduced site maintenance and long lasting performances.



PIPELAYERS



PIPE BENDING MACHINES



HYDRAULIC WEDGE
MANDRELS



MULTIPURPOSE
TRACTORS



LINE-UP CLAMPS



ROLLER CRADLE



VACUUM LIFT



PUMPS



ROLLER CRADLE





Located in Fushun, in the North-East of China, Fuwa has a vast manufacturing experience since 1904, when she started as a company in building heavy mining shovels for 's world's largest open pit coal mine.

In the early 80's a big step was made when Japanese style technology and manufacturing was introduced in a co-operation. Since then Fuwa has grown rapidly.

In 2003 Fuwa became a private company. This enabled Fuwa to go her own way, attracting more professional graduated staff and engaging smart cooperations with foreign companies and experts.

Today Fuwa has thousands of crawler cranes from 35 to 1250mt all over the world in daily operation. She may be the largest dedicated crawler crane manufacturer in China and will open a brand new manufacturing plant, located in the 'Li Shi' high-tech development zone near Shenyang soon,

You are the Expert, we are the Specialists'



Technical Performances

Model number	Engine	Capacity	Rated Output
FWX55	DEFEC 6.7	55 T @ 3.7 m	149 KW
FWX75	DEFEC 6CTAA8.3	75 T @ 3.6 M	149 KW
FWX85	DEFEC 6CTAA8.3	85 T @ 4 M	194 KW
FWX135	DEFEC 6CTAA8.9	135 T @5 M	225 KW

Fuwa Crawler Crane QUY Series

Model number	Engine	Capacity	Rated Output
QUY50C	Cummins QSB6-7	50tons/3.7m	127kw
QUY80B	Cummins QSL-9	80tons/4m	209kw
QUY160	Cummins QSL-9	160tons/5m	209kw
QUY250	Cummins QSL-9	260tons/4.8m	246kw
QUY400A	QSM-11	400tons/5m	298kw





BARIN Aerial Platforms, conceived to enable inspection and light maintenance works on road and railway bridges, the equipment's of the "AB" line, of the articulated-boom type with bucket at tip, are designed to offer great speed of maneuver, agility and safe operation. Mounted on standard trucks in the road version and on railcars and wagons in the railway version, the "AB" units guarantee versatility of use and they enable access to structures located both under-bridge and overhead. The bucket, large enough to accommodate 3 persons with tools, is made of aluminum alloy or fiberglass and it can reach overhead, depending on the machine model, a variable working height from 10 to 22,5 m. A triple automatic leveling device enables to operate with bucket floor perfectly horizontal in any work condition. The horizontal reach of the bucket under-bridge varies, depending on the model, from 5 to 22 m. Two control stations are provided, one in the bucket and one at the rotating turret. The equipment is hydraulic operated and all maneuvers are governed by means of electric and electronic devices. Personnel on board the bucket can control the slow hydraulic translation of the unit with the consent of the driver in the cab, which is made possible for whatever work position of the booms.

The bucket can be used for inspection of bridge piers and road embankments as well, thanks to the huge downwards reach of the booms which is comprised, depending on the model, between 10 and 25.5 m. The "AB" range of machines is completed with the units of the rail-road "COMBI" type which can be used for inspection and repair of both road and railway bridges. These units are mounted on standard 2-axles trucks fitted with additional steel wheels for railway transfer and operation. The "COMBI" units are designed to fit a variable railway gauge comprised between 1.000 mm. and 1.676 mm and they can reach a speed up to 40 km/h. The booms do not interfere with the electric wires placed at more than 4,5 m. height above the track level, neither during railway transfer nor during launching. Alternatively, these "COMBI" units can be mounted on standard railcars and wagons, to be used for inspection and repair of railway bridges only.

The primary power supply source of the units comes from the vehicle's diesel engine, PTO and main pumps, while it is supplied upon request a generator with auxiliary pumps as secondary power supply source. An intercom system enables the crew in the bucket to communicate with personnel on top the bridge deck.

Arial Platform (Road and Railroad versions) Under-bridge inspection unit (Road and Railroad versions)

	Model					
Specification	AP 18/6.5	AP 44/29	AP 52/32	AP 60/30	AP73/35 J2	AP 90 / 34 J2
MAX WORKING HEIGHT	18 M	44 M	52 M	60 M	73 M	90 M
MAX PLATFORM FLOOR HEIGHT	16 M	42 M	50 M	58 M	71 M	88 M
MAX WORKING OUTREACH	8.5 M	29 M	32 M	31 M	35 M	34 M
TURRET ROTATION	360° CONT.	360° CONT.	360° CONT.	360° CONT.	360° CONT.	360° CONT.
EXTENDED SIZES OF PLATFORM	1.2*0.85*1.10 M	3.6*0.9*1.10 M	3.6*0.9*1.10 M	3.6*0.9*1.10 M	3.6*0.9*1.10 M	3.6*0.9*1.10 M
SAFE WORKING LOAD OF PLATFORM	200 KG	280 / 440 KG	280 / 440 KG	280 / 440 KG	200 / 400 KG	280 / 440 KG
PLATFORM ROTATION APPROX.	90° + 90°	90° + 90°	90° + 90°	90° + 90°	90° + 90°	90° +
CONTROLS	PROPORTIONAL					
MAX WIND SPEED	12.5 M/S	12.5 M/S	12.5 M/S	12.5 M/S	12.5 M/S	12.5 M/S
VEHICLE GVW	3.500 KG	26.000 KG	32.000 KG	32.000 KG	42.000 KG	52.000 KG





With a superior quality product and value, CMC quickly became a world leading aerial lift manufacturer of both truck mounted and self propelled units. Today CMC is a world leader in aerial lift technology and our lifts are a best seller in 30 countries worldwide, integrating ingenious new ideas and always building lifts “with the operator in mind” translated into a simpler to operate and less extensive aerial lift. This winning combination gave our customers a better value and greater ROI.

S15: The most compact spider lift available on the market. Quick to operate and easy to set-up

S19HD: A heavy duty crawler lift

CMC S19 N: “N” is the most compact crawler access platform available in this size range with the shortest stabilizing width area, less than 10.2 m²

CMC S19E “E” stands for Easy: Easy operations, easy maintenance, perfect for hire! Only one working area with 200Kg unrestricted

S25: Big on height and outreach, small in dimensions and gross weight

S32: Unique 32 meters crawler lift available in the worldwide market with articulated double-telescopic boom with jib!

S41: Our largest and highest reach self propelled aerial aerial work platform with 16 meters lateral outreach

Products (Extreme)

Template	S15	S19 HD	S 19 N	S 19 E	S 25	S32	S41
Maximum working height	14.9 m	18.7M	18,8M	18,7M	25 M	32 M	41 M
Height on the floor	12.9 m	16.7 M	16,8M	16,7M	23 M	30M	39 M
Maximum reach	6.9 m	11 M	9,2M	9.0M	14 M	16 M	16 M
Basket sizes	1,2 x 0,7 x 1,1 m	1,4x0,6x1,1M	1,2x0,7x1,1M	1,2x0,7x1,1M	1,7x0,7x1,1M	1,7x0,7x1,1M	2,0x0,8x1,1M
B.Maximum load	230 kg	200 KG	230KG	200 KG	230 KG	220 KG	200 KG
Turret rotation	± 178 °	±360°(720°)	±178°(365°)	±178°(365°)	±360°	±360°(720°)	CONTINUOUS
Rotation basket	No	+90°/-87°	NO	NO	+90°	+92°	+90°
Weight	1960 kg	2970KG	2600 KG	2690 KG	3850	7280 KG	13400KG





Redaelli's first workshop for ironworks was opened in Bonacina, a little town near Lecco in north-west Italy, in 1819 by two brothers named Pietro and Giuseppe Redaelli. Around 1860 the workshop grew to a larger factory and moved to a new building in Malavedo, in the surrounding of Lecco. In 1870 Redaelli was incorporated and became a share capital company.

During the 1970's, Redaelli began to diversify its activities by expanding its product range in the field of steel wire and its derivatives products.

Thanks to the impressive and continuous growth and modernization of the business unit for steel wire ropes, Redaelli has become a world-leading supplier of special high-tech wire ropes for special applications. Redaelli has successfully built a brand name, which is today worldwide associated with quality, progress, technical expertise, and customer service in many fields of steel wire ropes.

Indeed, Redaelli ranks among the leading manufacturers of high performance wire ropes for industrial hoisting, mining, cableways, material transportation, oil industry, bridges, tensile structures, elevators, marine and fishing industries and power transmission lines.

Nowadays the sell out of part of the group and its merging into Severstal-Metiz, the Russian giant active in the steel derivatives, Redaelli open a new chapter of their long and glory full history. The vertical integration into a strong group will allow a fast expansion into new markets and the start up of several new innovative projects.

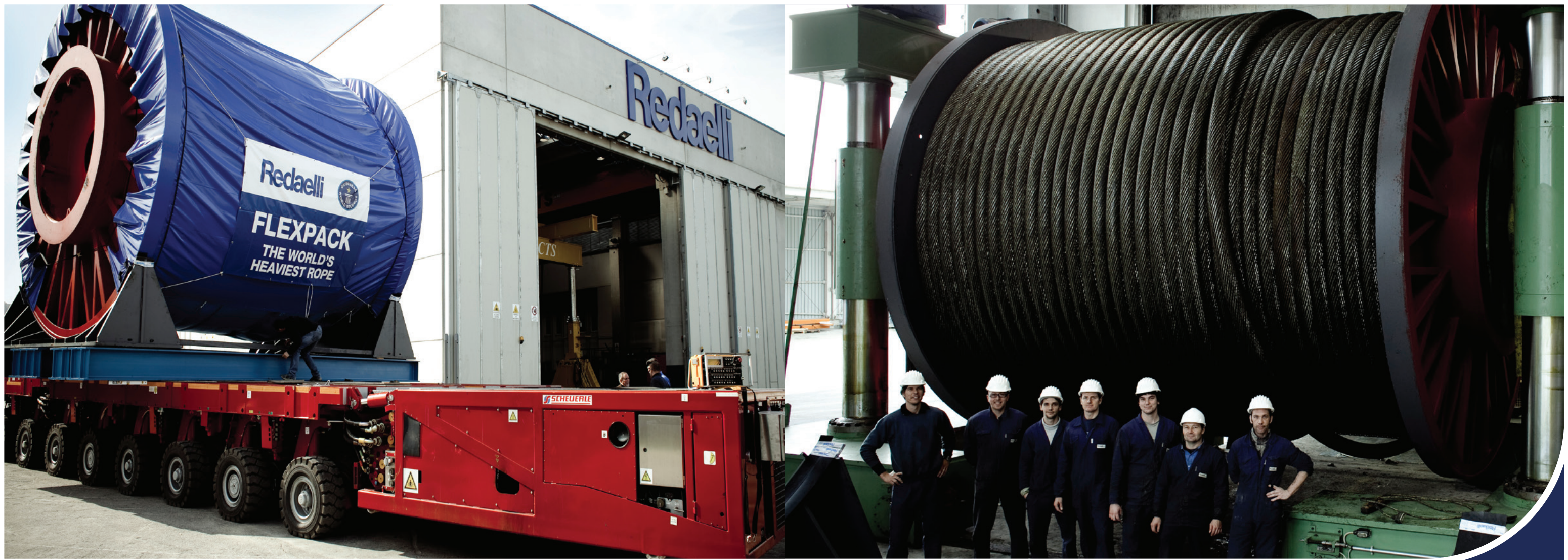
Our Mission

What Redaelli Wire Ropes Division offers to its customers are not only high-quality steel wire ropes, but also a comprehensive technical customer service capable of solving all your lifting or rope application problems? This implies an in-depth examination of the problem and the subsequent identification of the most suitable wire rope construction. All Redaelli wire ropes are designed and developed at our factory in GardoneValtrompia (Brescia, Italy) utilizing a very sophisticated computerized program to provide a fast and flexible technology. "We take care of our customers" is the motto that all employees at Redaelli are proud to display, and we all work tirelessly to satisfy our customers' needs through the quality of our products and services.

Products

Special Hoisting
Off-Shore
Cableways
Tensostructures
Drilling
Mining
Lifts
Fishing
Power transmission lines cables
Marble Cutting
Special Wires





Redaelli

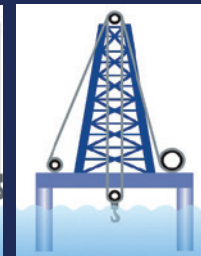
Redaelli is global market leader in the design and manufacturing of special steel wire ropes. Redaelli is synonymous with quality, innovation and deep technical expertise built up over its 200 years' history - an outstanding reputation for reliability, providing industry with the excellence of its products in a variety of applications.

The pioneering technology of Redaelli has always represented the main characteristic of the Company across the centuries - new materials and new applications have been continuously explored, thus keeping high differentiation in its core business, the steel wire ropes developed for industrial hoisting, cableways, material transportation, mining, oil industry and tension structures.

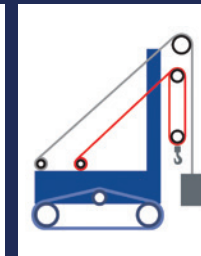
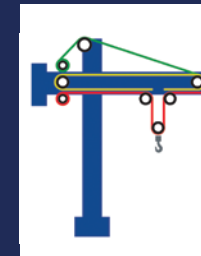
Redaelli is internationally esteemed for its strong reputation in supporting clients with a high-grade technological service, allowing them to develop and perform the best customized solutions. This implies an in-depth examination of all technical aspects of project, the subsequent identification of the most suitable and safest product, as well as the design and production of systems for the engineering of tension structures.

All products are Made in Italy: Redaelli designs, develops, manufactures and markets its special wire ropes. Wire ropes are produced using a sophisticated software capable of providing fast and flexible solutions, in the factories at Gardone Val Trompia (Brescia) and Trieste, the latter specialized in the production of the Giant Ropes (>100t weight range) dedicated to the offshore application. Redaelli's logistic service and technical assistance are guaranteed in Italy through its TECI network distribution. Headquartered in Milan the commercial network is globally integrated by the subsidiaries in China and Brazil.

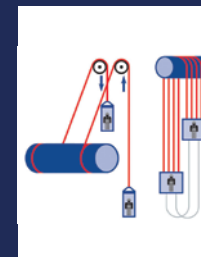
OFFSHORE



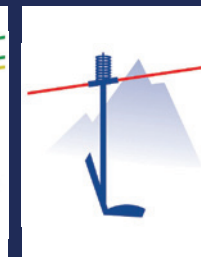
CRANE & INDUSTRIAL



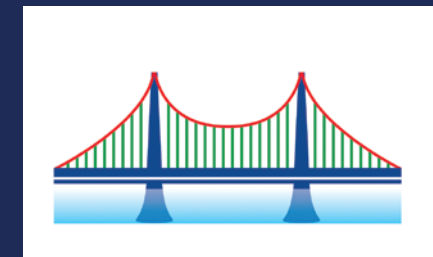
MINING

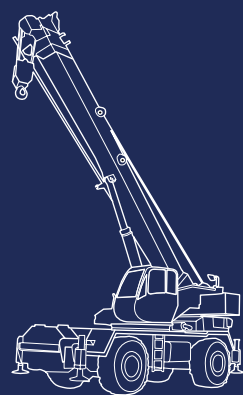


CABLEWAYS



TENSOSTRUCTURES





LOCATELLI CRANE S.r.l. is the first Italian Company manufacturer of telescopic hydraulic cranes and specialized in the production of Rough Terrain Cranes, ranging from 12,5 through 80 metric ton capacity as well as city cranes 20 ton capacity, with a great choice of options for different applications.

The success of Locatelli cranes is based in their reliability, high performance level and low maintenance costs as a result of high quality components, no compromise in construction and long experience of specialized manufacturing.



● **Technical assistance**

Assistance and efficiency for our customer's cranes is always ensured.

● **International partner**

Where there's need, throughout the world, to move heavy loads Locatelli Crane becomes your ideal mate.

● **Training courses**

Locatelli Crane arranges classes with the aim to train operators in the use of various model of cranes.

● **Spare parts**

Well equipped warehouse is able to respond to request for crane parts provisioning.

● **Safety**

Hydraulic mobile cranes Locatelli Crane were built to guarantee high safety standards.

● **Business consulting**

Highly motivated sales representatives are available to advice you about the best cranes according to your needs.





Link-Belt C R A N E S

Link-Belt Cranes is a leader in the design, manufacture and sales of telescopic and lattice boom cranes, with headquarters in Lexington, Kentucky.

In the recent decade, a dynamic and highly-focused Link-Belt has emerged as a market leader in crane design and product quality standards by focusing on continuous improvement and employee empowerment.

Facilities

Link-Belt's core production base and center for worldwide operations is its 770,000 sq. ft. manufacturing facility in Lexington, Kentucky. With major expansion plans over the last ten years along with continuous improvement philosophies, this facility has emerged as the most modern crane facility in North America.

Link-Belt is committed to the design, manufacture and service of quality products that satisfy the needs of its customers worldwide. Link-Belt operates on the principles of continuous quality improvement, ISO 9001, and established values that support the vision of quality. These principles result in reduction in waste, better use of company resources and improved employee and customer satisfaction.

Rough Terrain Cranes	:	from (50 – 150) ton
Truck mounted cranes	:	from (40 – 140) ton
All Terrain Cranes	:	from (180 – 280) ton
Telescopic Crawler Cranes	:	from (50 – 250) ton

Rough Terrain
Telescopic Terrain
Truck Terrain
All Terrain
Lattice Crawler
Lattice Truck
Telescopic Crawler





Lift, move, rotate: as easy as saying it. Since 1973 the Faresin Group has been manufacturing high quality mechanical products. The design and the construction of the entire range of FH series telescopic handlers are based on the Group's wealth of experience and on a very well-defined guiding philosophy: to offer clients the most productive breakthrough technology in order to increase their competitive potential. It is precisely this ongoing dedication and effort that the Faresin Handlers' technicians and team put into achieving these goals that is transformed into technical progress, continuous improvement of our products and concrete advantages for our customers.

Products

FH presents a comprehensive range of machines and is one of the few manufacturers worldwide that can offer a rotating platform. Our ranges of machines, from the compact Wallaby 6.25 to the powerful 10.70, and including the rotating 18.45 Storm, have been designed with the user's needs in mind. FH machines are available in a variety of configurations with a selection of different features.

AGRI: base machine plus double-acting hydraulic connections installed at the back and 7-pole electric sockets for trailer lights.

HS: base machine in both industrial and Agri models, in addition 2-speed mechanical gearbox and roadworthy approval to 40 km/h.

TR: base machine plus special OCDE approved cab (width increased by 50 mm, three emergency openings, structure designed for greater visibility), 2-speed mechanical gearbox and approved to travel at 40 km/h and to tow 20 t, double-acting hydraulic connections installed at the back and 7-pole electric sockets for trailer lights.

Faresin Telehandler

	Model	Max. Lifting Capacity (t)	Capacity at Max. Height (t)	Capacity at Max. Reach (t)	Max. Lifting Height (m)	Operating Weight (t)	Max. Speed (Km/h)
Small Range	6.26	2.6	2	0.9	5.9	4.7	30
Compact Range	6.30 C	3	2.5	1.8	6	6.55	40
	7.30 C	3	2	1	7.1	6.55	40
	9.30 C	3	1.2	0.4	8.9	6.95	40
Middle Range	7.30	3	2.5	1.2	7.1	8.05	32 - 40
	7.35	3.5	2.5	1.2	7.1	8.05	32 - 40
	7.45	4.5	3	1.8	7.1	8.65	32 - 40
	8.40	4	2	1.45	8	8.8	32 - 40
	9.30	3	2	1	9	8.85	32 - 40
	11.35	3.5	1.5	0.5	10	9.15	32 - 40
Heavy Duty	9.60	6	3	1.75	8.8	10.8	40
	9.70	7	3	2.5	8.8	11.1	40
	10.65	6.5	2.5	2	9.5	11.2	40
Big Range	14.42	4.2	3	1	13.6	11.4	32 - 40
	17.40	4	2.5	0.4	16.4	11.9	32 - 40
	17.45	4	2.5	0.5	16.4	12.03	32 - 40





For us at Faresin Industries, the reduction of CO2 emissions is not just an obligation, but something we really care about and practice, every day. The entire process is characterized by careful attention: from the design right through to the final product, including a attentive supplier selection process. Each step is the object of careful assessment in order to guarantee the efficient reduction of emissions. This is the goal we have set for ourselves as we introduce a market first: self-propelled mixer feeders carriers combining high performance with reduced consumption. This is the precise reason we have decided to name the new generation of machines Ecomix and Ecomode. For us, respect for the environment is not a limiting factor but rather an opportunity for development, given that a reduction in operating costs will naturally translate into increased returns for farmers.

The self-propelled mixer wagons are operated and handled by an independent engine and equipped with a comfortable cabin. The trailed mixers are machines that are operated by the PTO of the tractor that allow the movement of the augers through the shaft and the transmission system. They are agricultural machines used for mixing and distributing food to ruminants, particularly to dairy cattle and beef that are part of the zootechnical discipline, representing one of the most advance technologies of animal feed.

Versions

STANDARD : for families Mono, Double, Mono Compact and Double Compact

ECOMIX : for all the families

ECOMODE : not for the family Mono Compact

All Types: Leader Mono, Leader compact , Leader Mono Ecomix , Leader Mono Ecomode , Leader Compact Double Ecomix, Leader Compact Double Ecomode, Leader double, Leader double Ecomix, Leader double Ecomode, Rambo, Twinner, Magnum Mono.





Toyo Pumps is a world leader in slurry pumping solutions; our pumps handle everything from dirty water to the heaviest slurries. So, whether you're building a manmade island; filling cofferdams for a new marina; moving the most seriously sediment slurry from a tailings pond; eliminating clogging at your paper recycling plant; dewatering your mine or cleaning a variety of tough municipal and industrial pumps - you can rely on Toyo Pumps to get the job done.

You will find Toyo Pumps hard at work in a variety of industries, including: Mining, Power, Dredging/Construction, Steel, Petroleum, Chemical, Coal, Food and Beverage, Pulp and Paper, Municipal, Sand and Gravel, Environmental, Automotive, Cement, Agricultural, Coal, Textile and Cellulose industries.

Products

- Submersible Pump
- Horizontal Pump
- Vertical Pump
- Dredging System
 - Inland Dredging
 - off shore Dredging

Toyo Electric Dredging Pumps

Model	Power Kw	Outlet Diam. Inch	mm	Capacity m³/h	Manom. Head m	Particle Size mm	Weight Kg.
DP 15	11	4	100	90	15	35	490
DP 15B	11	6	150	192	8	60	530
DP 20	15	4	100	90	20	35	550
DP 20B	15	6	150	192	10	60	540
DP 30	22	4	100	90	30	35	750
DP 30B	22	6	150	192	15	60	730
DP 40B	30	8	200	360	12	40	750
DP 50	37	6	150	192	25	60	950
DP 50B	37	8	200	360	15	60	970
DP 50BL	37	10	250	720	5	100	1150
DP 50H	37	6	150	192	28	40	1050
DP 550S	37	4	100	60	46	35	730
DP 75B	55	8	200	360	22	40	1120
DP 100B	75	8	200	360	30	60	2200
DP 100BL	75	10	250	720	15	100	2700
DP 150	110	8	200	390	40	120	3500
DP 150L	110	8	200	480	30	120	3500
DP 150B	110	10	250	720	22	120	3500





Grindex is a world leader in electrical submersible pump technology for demanding applications such as construction, mining and heavy industry. The company was founded in 1940, and has been located close to Stockholm, Sweden, from the Start. We began designing and producing submersible pumps in 1960 to meet the needs of construction sites and mines.

Featuring robust construction, the SMART motor protection system and a unique air valve to enable dry running, Grindex pumps deliver reliable performance in the world's toughest environments. Grindex Drainage Pumps can be used in many different applications such as mining sector, constructions, shipyards, concrete plants and all industrial plants. Grindex Drainage Pumps can be used in the dirty waters up to 1,2 gr/cm³. Grindex Sludge Pumps are suitable to dewater up to 2,0 gr/cm³ water density. These pumps can be used in ceramic factories, marble plants, waste treatment plants and different heavy industry areas.

GRINDEX Sludge Pumps

Model	Power (Kw)	Outlet Diam. (Inch)	Max. Flow (m ³ /h)	Max. Head (m)	Weight (Kg)
	1.2	2	25	12	15
SALVADOR	2.7	3	48	15	34
SENIOR	5.1	4	122	8.5	57
SANDY	6.7	3	61	42	57
SOLID					

GRINDEX Drainage Pumps

Model	Power (Kw)	Outlet Diam. (Inch)	Max. Flow (m ³ /h)	Max. Head (m)	Weight (Kg)
MICRO	0.59	2	15	11	10
MACRO	0.97	2	18	14	12.5
MINEX	1.7	2	41	18	21
MINETTE	2.7	3	56	22	32
MINOR	4.5	4	122	37	52
MAJOR	6.7	4	140	46	54
MASTER	11.7	6	202	68	80
MATADOR	20	6	335	65	143
MAXI	41	8	865	90	285
MAGNUM	64	10	1240	100	540
MEGA	95	6	540	195	985

Grindex Drainage Pumps
Grindex Sludge Pumps
Grindex Inox Drainage Pumps
Grindex Inox Sludge Pumps





PERIN™

Our company was founded by Mr. Perin Diotisalvi: our small craft produced generating sets, motor welders and motor pumps. In the space of few years, the company developed and specialized in planning and building generating sets of ever-bigger powers. With the passing of time, the small craft became an important and well-known industrial reality with thousands of installations all over the world.

At present, the company has got an annual production of about 3000 generating sets whose range covers small and big powers, from 2 up to 12.000 KW. Our production is placed in three factories of our property in Europe, which are divided up by the type of their products and controlled directly by the Italian factory where special generating sets are built according to customer's order. In Italy there's besides our engineering staff, the supply and transport department for customer service all over the world and the sales department, which is further divided into six big geographic areas.

All the components which are needed to build our products are studied, planned and tested internally. 80% of the necessary components, apart from the engine and the alternator, is internally produced in specific departments, whereas the remaining part is ordered to trustworthy companies our staff selected.

The direct relationship with engine and alternator producers allows a close technical/business cooperation which enables us to have specifically designed products for the uses we require. The experience and the professional competence of our staff has made it possible to supply generating sets which have no rivals in the world for their quality, performances and competitiveness. The technical evolution of every single component is now designed and projected together with the most prestigious engine and alternator producers, by strengthening the prestige of our company all over the world.

We have been concluding special supply and transport agreements with the engine and alternator producers in the three countries where we have productive branches, that is to say that our warehouses are also used for stocking components for other producers in this field. The high volume of material we manage allows us to offer a bigger availability of components and, in this way, we can satisfy the highest number of requests with quick delivery times which would be otherwise impossible. At present, we can supply generating sets from 2 up to 1800 KVA in 8 working days at the latest, excluding exceptional cases, obviously.





KB2



KB3



Special Lighting Tower

EL DIDI TOWERiGHT
Light Your Projects

El Didi Group introduce a new lighting tower with vertical mast. Compact and robust the KB2 is the ideal product for constructions sites, rental, oilfields, civil defense, events, drilling and mining sites. KB2 is equipped with Kohler-Lombardini engine and its able to illuminate more than 4000sq.m due to the hi-res 1000W metal halide lamps mounted on it.

With KB3 El Didi Tower you have the possibility to connect the machine to an external power source such as the KB2 El Didi Tower. only (1) Generator permits to run 2 light towers.

Maximum the number of units that can be placed on a truck (32 unit), giving a significant Reduction in transport costs.

Model	Phase power	Max Extension	Metal halide Lamps	Wind speed resistance
KB2	9KVA- 220V-50/60HZ	8 M	4x1000 w	80 KM/H
KB3	9KVA- 220V-50/60HZ	7 M	4x400 W	80 KM/H
special L.T	10 KVA,15KVA,20KVA	8.7 M Hydraulic Rising System	4x1000 w 6x1000/1500 w Halogen Lamps	80 KM/ H





DRILLMEC is specialized in the design and in the manufacture of products for the upstream energy industry. Our company produces drilling and work-over rigs for onshore and offshore application as well as wide range of drilling equipment.

DRILLMEC is located in a modern plant over an area of 125,000s q.m. The result achieved in over 100 years of international experience have been recognized by customers worldwide and stem from our commitment to continuous improvement through the pursuit of high quality, strong focus on human resources and efficiency throughout the whole process.

At the core of Drillmec's identity lie three principles:
Safety, Environment and Innovation.

Our worldwide reputation of reliability is a reflection of our fine engineering development, timely deliveries and excellent after-sales service.

Hydraulic Drilling Rigs

Mobile Drilling Rigs

Draw Works

Pipe Handling System

Rig Automation

Hydraulic Top Drives

Triplex Mud Pumps

Derricks & Offshore Equipment

Mast & Substructures

Customized Rigs

J. MASSARENTI
MANUFACTURES AND DRILLING CONTRACTORS

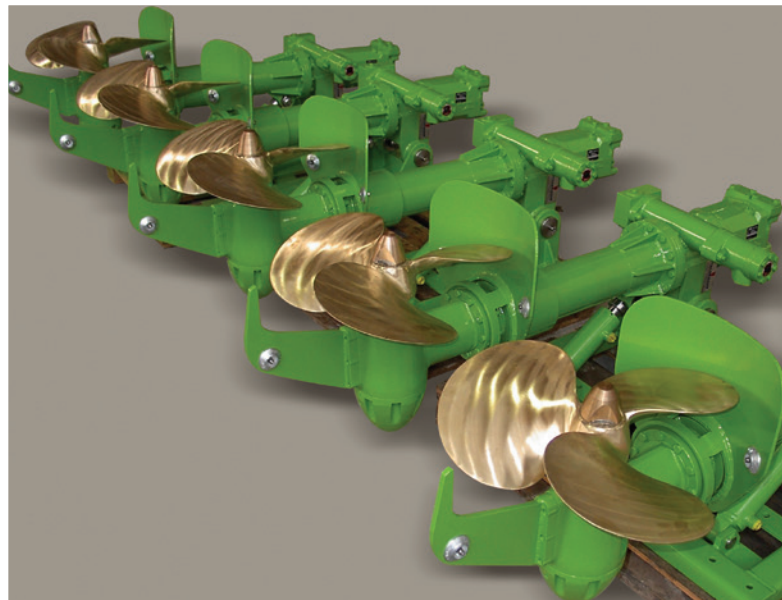
SILVAD
BALLERINI & C.S.P.A.

COMASDUE
COSTRUZIONE MACCHINE ATTREZZATURE SPECIALI



SOILMEC





ITALDRAGHE SpA projects and constructs dredging equipment and has delivered hundreds of dredging and pumping systems worldwide. Over the last 60 years the company, which designs and produces its products in Italy, has supplied many dredgers for rivers, lakes, dams, canals, ports, mines and quarry projects.

It all started in 1952, in San Giovanni in Marignano, on the Italian Adriatic Coast. Through the evolution of time and technology ITALDRAGHE SpA has arrived at the Third Millennium into with a wide network of contacts and projects all over the world. Today the firm is managed by the second-generation management. The owners run the company with unparalleled professionalism together with the same passion their fathers had.

ITALDRAGHE SpA's Mission is to project and construct dredging equipment of the highest quality to meet all its clients' needs worldwide. Its vision is to continue to be a reference point in the dredging sector for quality, customised solutions, innovation and environmental protection.

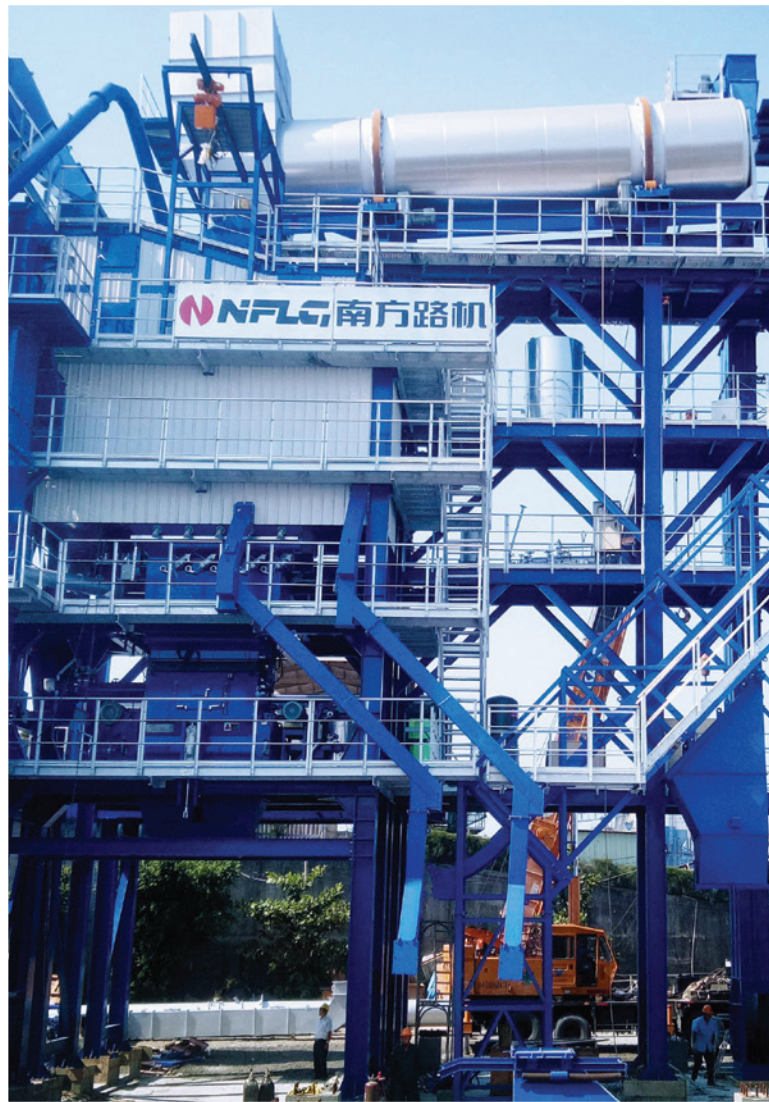
ITALDRAGHE SpA's product range includes cutter suction dredgers (CSD), water jet dredgers, dredging pumps and all the equipment necessary for a dredging quarry such as: booster stations, workboats, rudder-propellers, bow thrusters, dredging buckets and harvesters. ITALDRAGHE SpA provides both complete dredgers and single dredging components.

In addition to standard dredging equipment, ITALDRAGHE SpA provides dredging solutions, which means the product is designed to fit the customer's specific usage and requirements.



Cutter Suction dredgers
Dredge Units
Dredging Heads
Harvesters
Rudder Propellers
Transverse Thrusters





We focus on mixing as core business. iE illl feij f1 About Us NFLG is a leading professional service provider and manufacturer engaging in specialized solutions in the engineering mixing sector of China.

NFLG is a pioneer of mixing technologies and a drafter of multiple national standards for China's engineering mixing sector. As a recognized leader of mixing technologies in China, NFLG is devoted to the R&D of mixing equipment. NFLG is a meritorious Chinese brand with leading-edge technologies and excellent products of top quality.

With focus and expertise, we can outperform to achieve sustainable growth. We have 29 distribution outlets and 32 parts centers in China. We have established strategic partnerships with many world-class enterprises. We provide 24-hour services of professional technologies via cloud platform. We provide product lifetime management and build an excellent service brand. For 25 years, we have consistently focused on mixing technologies!

Concrete Mixing
Asphalt Mixing
Dry Mortar Mixing
Aggregate Processing
Stabilized Soil Mixing Plant



HEAD OFFICE

ELDIDI HOLDING GROUP LTD.

50 Elmoltaqa Al-Araby St.
El Nozha – Cairo , Egypt
Tel. +202 20644270/1/2/3/4/5/6 Fax.
+20 2 20644277
Email : soilmec@eldidigroup.com

CANADA

EGYMEC CANADA CORPORTATION

9900 Cavendish, Suite 305
Ville St-Laurent, Qc. H4M 2V2
Tell: +1 (514) 935-0303 Ext 222
Fax: +1 (514) 935-0005
eldidi@eldidigroup.com

UNIVERSAL CANADA CORPORTATION

9900 Cavendish, Suite 305
Ville St-Laurent, Qc. H4M 2V2
Tell: +1 (514) 935-0303 Ext 222
Fax: +1 (514) 935-0005
eldidi@eldidigroup.com

EGYPT

EGYMEC S.A.E. DRILLING TOOLS AND STRUCTURES

Factory:
Land # 09 – Block # H
Attaka Free Zone area
Suez – Egypt
Tel.+2 062 32 30 473,4,5,6,7,8
Fax.+2 062 32 30 479
info@egymec-eg.com

EGYMEC FOR ENGINEERING

125 Alyasamin # 8 , fifth settlement ,
New Cairo , Cairo , Egypt.
Tel. +20 2 23061680
Fax. +20 2 23061681
Email. Info.linkbelt@egymec-eg.com

SOILMEC MISR S.A.E

St. #90 Down Town, Commercial
Building no. S3 Floor no. 2, office # 9,
5th Settlement, New Cairo – EGYPT.
Tel. +20 2 23146022 / 3 /4
Fax. +20 2 23146025
soilmec@eldidigroup.com

EGYDRILL FOR MECHANICAL FOUNDATION

8 Mokhtar Saeed st., Ard El Golf, Cairo, Egypt.
Tel. +20 2 26910528/ 9
Email: hossam.shorbagy@egydrill.com.eg

K.S.A

SOILMEC ARABIA Co.

Al Nakhil Dist. /2 Abu Al Alla Al Hamadani St.
Opposite Rolaco Group
P.O.Box 1553, Jeddah 21441, KSA
+966 12 289 1024 / 289 1455 / 289 1464 / 289 1564
info@soilmecarabia.com

Our Agent in Eastern Region:

SOILMEC ARABIA CO.
Jubail Highway, Opp. El Qateef Hospital, Dammam, KSA
Contact Person: Eng. Hossam Anour +966 54 3523 195
hossam@soilmecarabia.com

U.A.E

SOILMEC EMIRATES LLC

Office No. 212 Al Wasl Building
Jumeirah Road, Dubai UAE
PO BOX 49986
Tel: +971 4 345 1881
Fax : +971 4 345 1886
Email: soilmec@emirates.net.ae

UNIVERSAL AUGERS GULF FZCO

Jebel Ali Freezone, Dubai - U.A.E.
P.O. Box 261106
Tel. +971 4 883 1755
Fax +971 4 883 1756
e-mail:uniauger@emirates.net.ae

SOILMEC GULF FZCO

NC-04 (RA 7 / 8) Blue Shed
Warehouse Jebel Ali Freezone,
Dubai, UAE PO Box 18301
Tel. +971 4 883 3666
Fax +971 4 883 3667
e-mail: soilmec2@emirates.net.ae

SOILMEC ARABIA LLC FZC

Al Hayl Industrial Area
Fujairah Free Zone No.3
P.O. Box 5232 Fujairah UAE
Tel. No. +971 9 277 8145
Fax No. +971 9 277 8148
Email: soilmec@emirates.net.ae

CHINA

EGYMEC PETROLEUMS SERVICES FZCO

SHANGHAI REPRESENTATIVE
Office Room 508, No. 45 YAN'AN
Road (E), Shanghai 200002, PRC
Tel. +86-(0)21-63330576 63330629
Fax. +86-(0)21-63330352



EL Didi GROUP distributes drilling tools and structures all over the world. supported by subsidiary companies and representative offices

EGYDRILL FOR MECHANICAL FOUNDATION
SOILMEC MISR S.A.E – CAIRO (EGYPT)
EGYMEC FOR ENGINEERING CO. – CAIRO (EGYPT)
EGYMEC SAE, DRILLING TOOLS AND STRUCTURES – SUEZ (EGYPT)
SOILMEC ARABIA CO. – JEDDAH (KSA)
SOILMEC EMIRATES LLC – DUBAI (U.A.E.)
SOILMEC GULF FZCO – DUBAI – JEBEL ALI (U.A.E)
UNIVERSAL AUGERS GULF FZCO – DUBAI – JEBEL ALI (U.A.E)
SOILMEC ARABIA LLC FZC – FUJAIRAH (UAE)
AL JUMA'A GROUP INTERNATIONAL - (KUWAIT)
UNIVERSAL AUGERS CANADA - QUEBEC (CANADA)
EGYMEC CANADA CORPORATION - TORONTO (CANADA)
EGYMEC SHANGHAI REPRESENTATIVE -(CHINA)



Soilmec Misr S.A.E

St. #90 Down Town, Commercial Building no. S3
Floor no. 2, office # 9, 5th Settlement,
New Cairo – EGYPT.

Tel. +20 2 23146022 / 3 /4

Fax. +20 2 23146025

eldidi@eldidigroup.com

www.eldidigroup.com